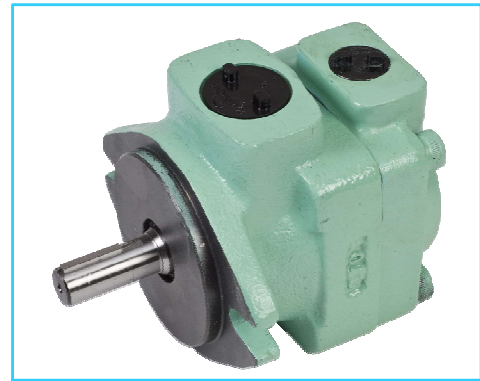
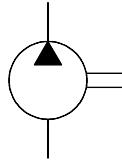


**PVR1T Series Single Vane Pumps**

These Pumps are widely used as a source of hydraulic power. They combine stable performance and robust construction with a wide range of delivery rates.

Graphic Symbol



**Specifications**

Model Number	Geometric Displacement cm <sup>3</sup> /rev.	Max. Opr. Pressure Kgf/cm <sup>2</sup>	Output Flow and Input Power	Shaft Speed Range r/min.		Mass (Approx.) Kg.	
				Max.	Min.	Flange Mounting	Foot Mounting
PVR1T - 4	3.5	125	Refer to Page 122 & 123	1800	750	5.8	7.5
PVR1T - 6	5.5						
PVR1T - 8	7.8						
PVR1T - 10	8.7						
PVR1T - 12	11.5						
PVR1T - 15	13.8						
PVR1T - 17	14						
PVR1T - 31	22.0					6.2	8.0

**Model Number Designation**

F	- PVR1T	- 4	- L	- R	A	-20	80
Special Seals	Series	Nominal Displacement	Mounting	Direction of Rotation As Viewed From Shaft End	Discharge	Design * Number	Design Standard
<b>F:</b> For Phosphate Ester Type Fluids (Omit if not required)	<b>PVR1T</b>	<b>4, 6, 8, 10, 12, 15, 17</b>	<b>L:</b> Foot Type <b>F:</b> Flange Type	<b>R:</b> Clock wise (Normal) <b>L:</b> Counter Clockwise	(See Drawing) <b>A :</b> Normal (Upwards) <b>B :</b> Bottom <b>R :</b> Right <b>L :</b> Left	<b>20</b>	<b>80</b>
		<b>31</b>					<b>80H10</b>

\* Design numbers subject to change from 20 to 29, but installation dimensions remain as shown.

\* For instructions regarding changing the port positions, consult YUKEN INDIA LTD.

**Cartridge Kit Model Number**

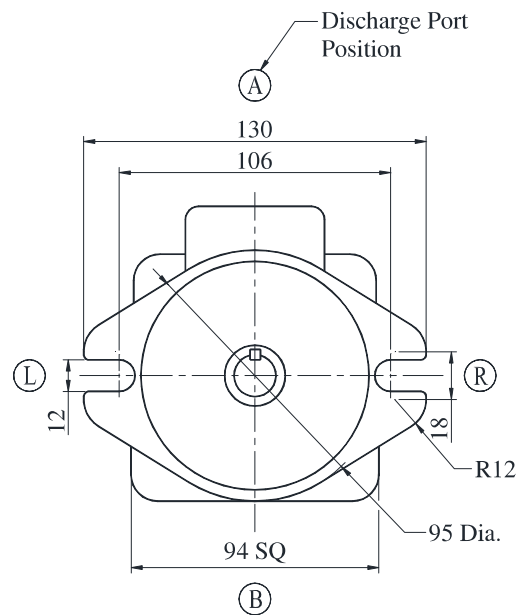
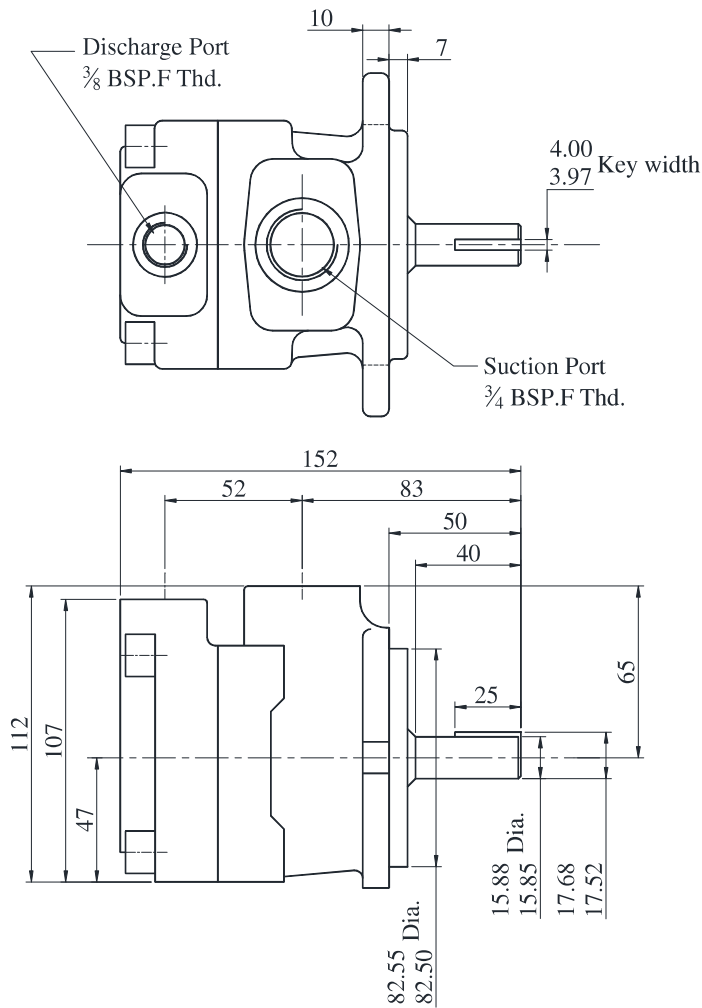
CPVR1T	-4	-R	-20
Model Number	Nominal Displacement	Shaft Rotation	Design No.
<b>CPVR1T</b>	<b>4</b>	<b>R:</b> Clockwise (Normal)	<b>20</b>
	<b>6</b>		
	<b>8</b>		
	<b>10</b>	<b>L:</b> Counter-Clockwise	
	<b>12</b>		
	<b>15</b>		
	<b>17</b>		
<b>31</b>			

\* For instructions regarding replacing cartridge kit, consult YUKEN INDIA LTD.

**PVR1T-※-F-※※-2080**

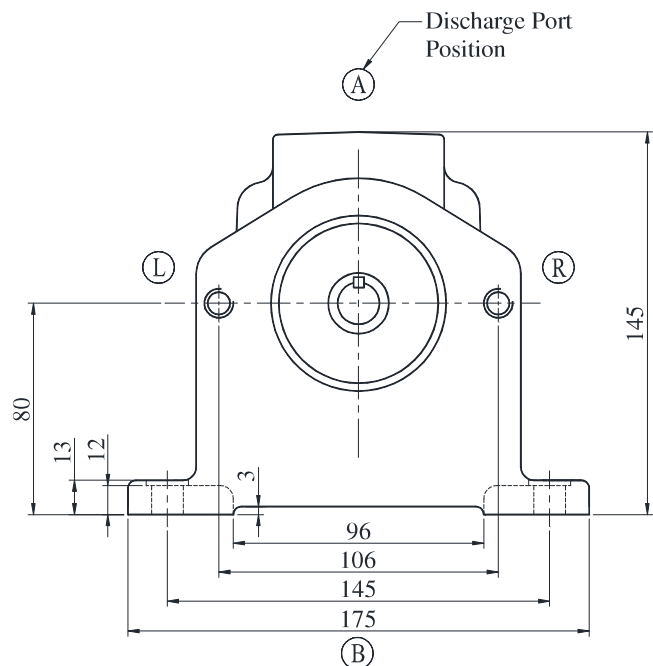
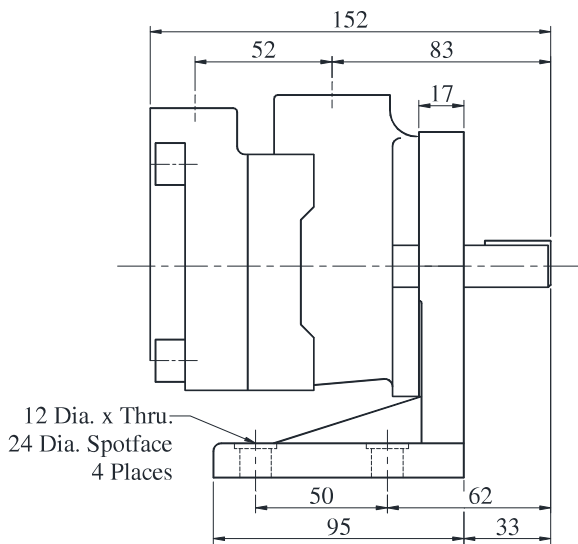
**DIMENSIONS IN MILLIMETRES**

● **Flange Mounting**



**PVR1T-※-L-※※-2080**

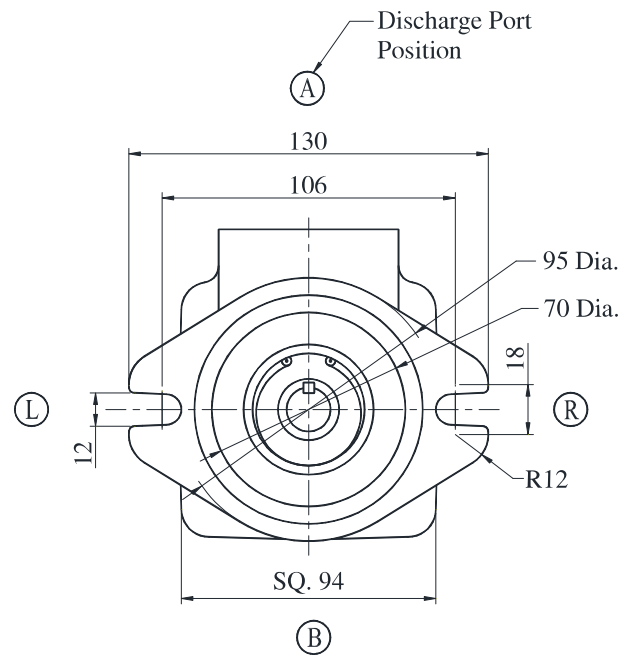
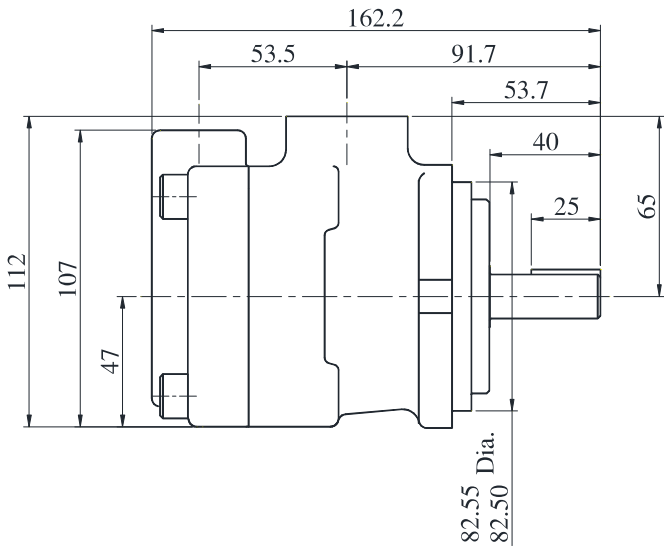
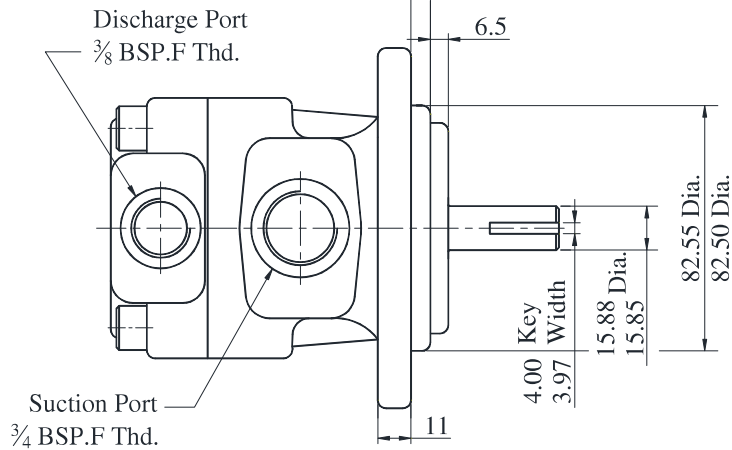
● **Foot Mounting**



**PVR1T-31-F-※※-2080H10**

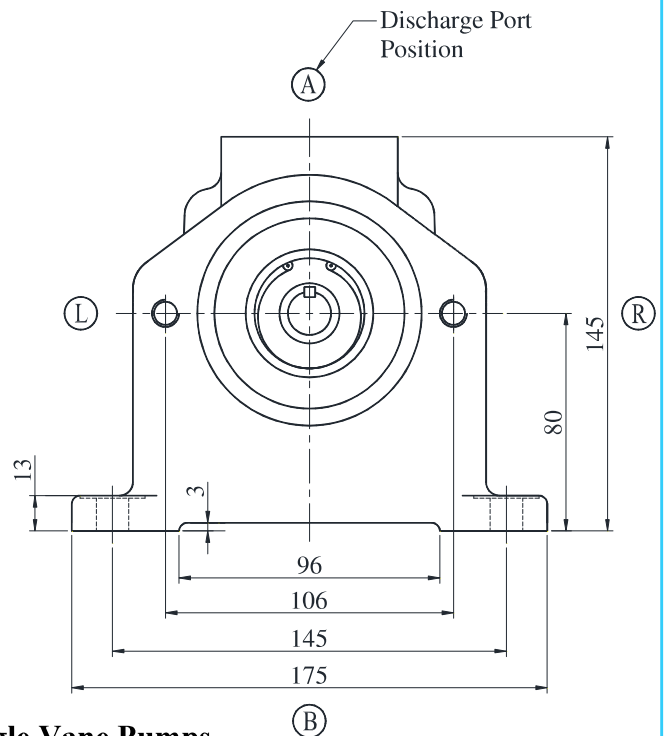
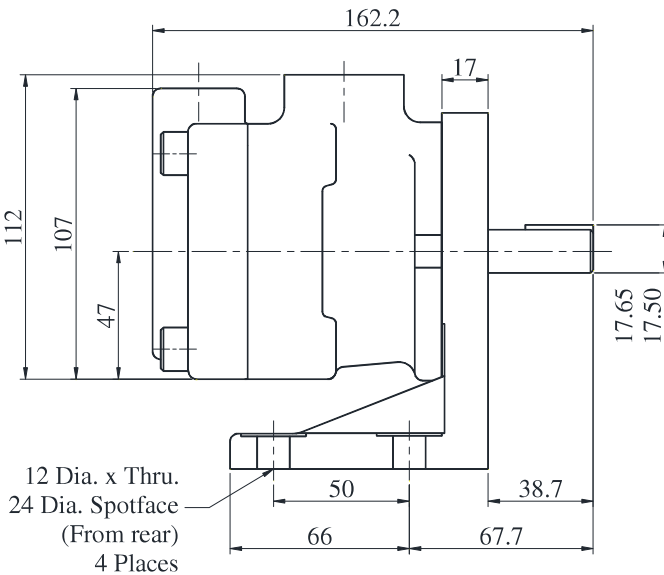
**DIMENSIONS IN MILLIMETRES**

● **Flange Mounting**



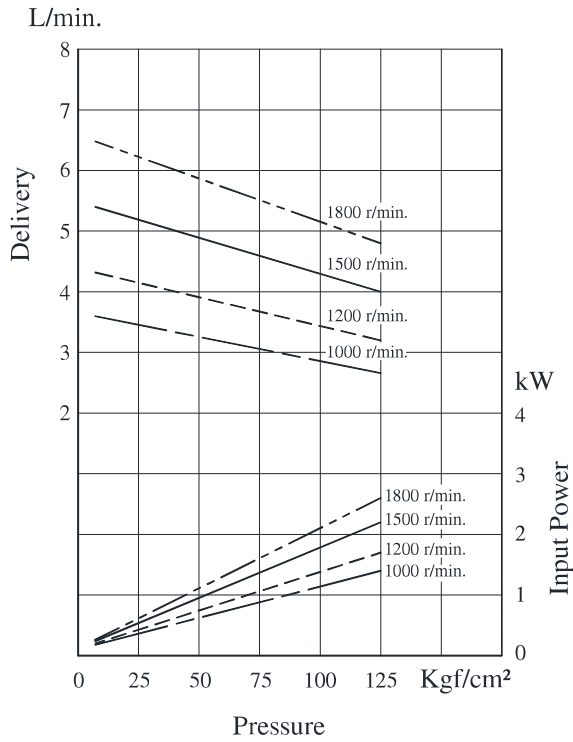
**PVR1T-31-L-※※-2080H10**

● **Foot Mounting**

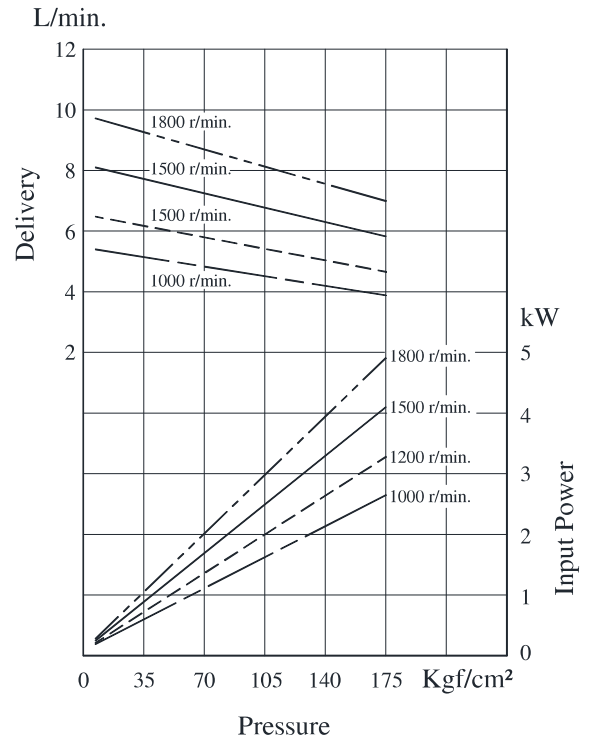


Typical Pump Characteristics Oil Viscosity 20 cSt [ISO VG 32, Temp 50<sup>0</sup> C]

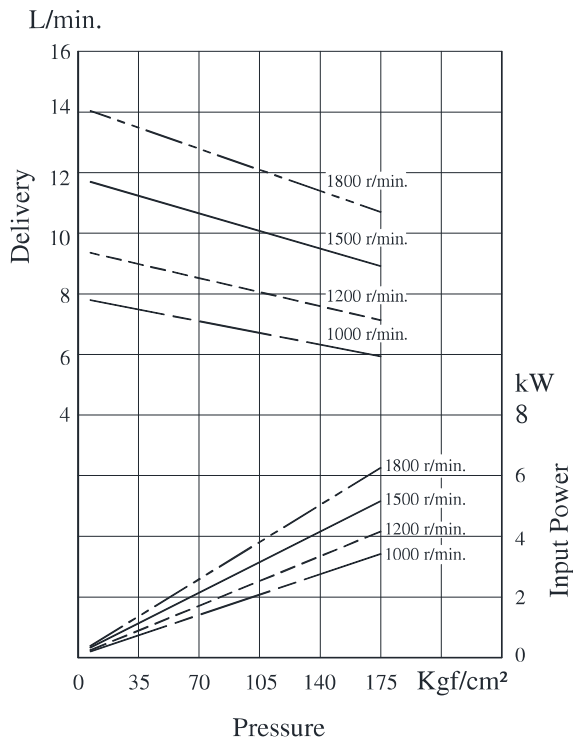
● **PVR1T - 4**



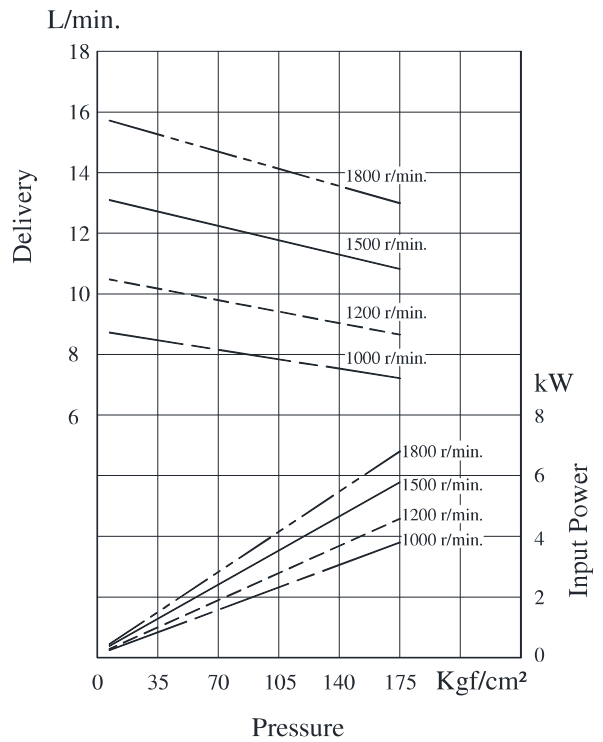
● **PVR1T - 6**



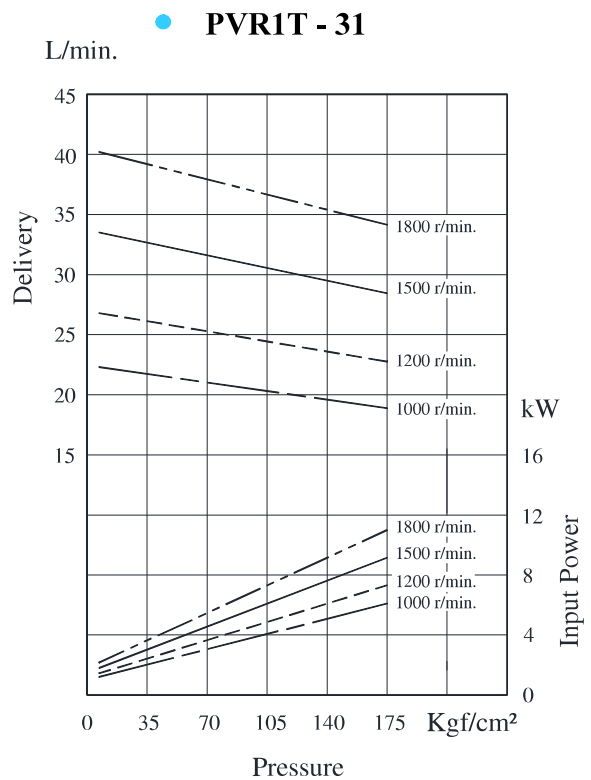
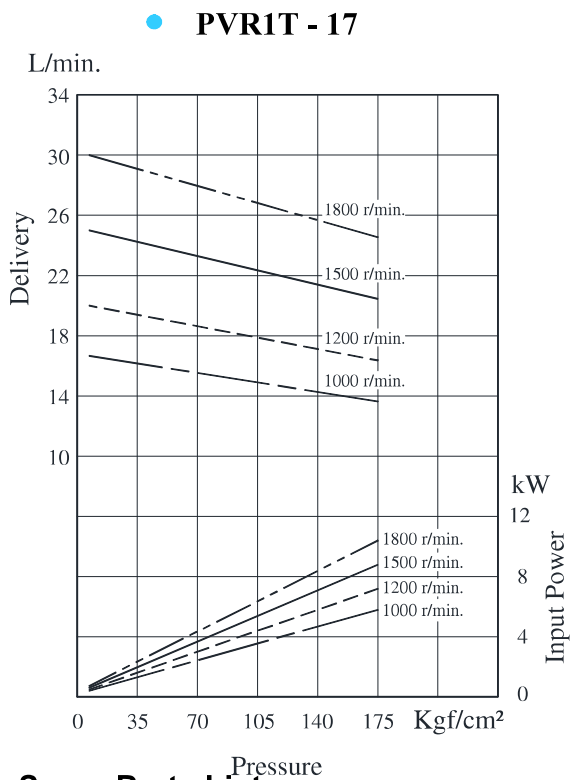
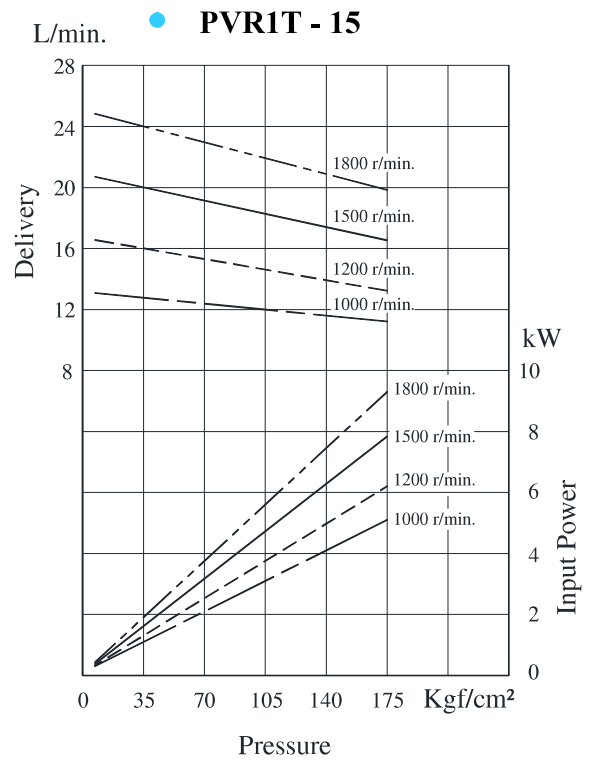
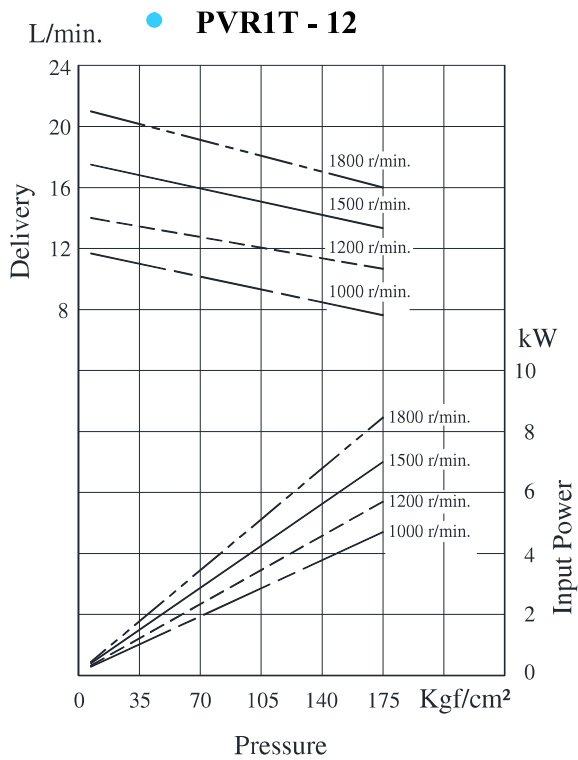
● **PVR1T - 8**



● **PVR1T - 10**



Typical Pump Characteristics Oil Viscosity 20 cSt [ISO VG 32, Temp 50<sup>0</sup> C]



**Spare Parts List**

**List of Seals**

Sl. No.	Name of Parts	Part No.	Qty.
1.	O-Ring	SO-NB-G80	1
2.	O-Ring	SO-NB-G60	1
3.	O-Ring	SO-NB-G35	1
4.	Oil seal	ISD 20307	1

Note : When ordering the seals, please specify the seal kit number KS-PVR1T-2080.